

Stainless steel 316 Glass Railing Standoff Base Cap Glass Clamp Hardwares for 1/2" - 3/4" Glass Panel

First name	Stainless steel 316 Glass Railing Standoff Base Cap Glass Clamp Hardwares for 1/2" - 3/4" Glass Panel
Model number:	SF-50
Diameter	50 mm
Productive process	CNC machining
Material	Stainless steel 304/316.
All done	Satin / mirror / black
Installation	mounted glass wall
For thicknesses of glass	10-19mm
MOQ.	10 pcs per item







The Glass railing It is a security barrier that is becoming increasingly popular.

It is primarily a protective railing that protects its users from falling.

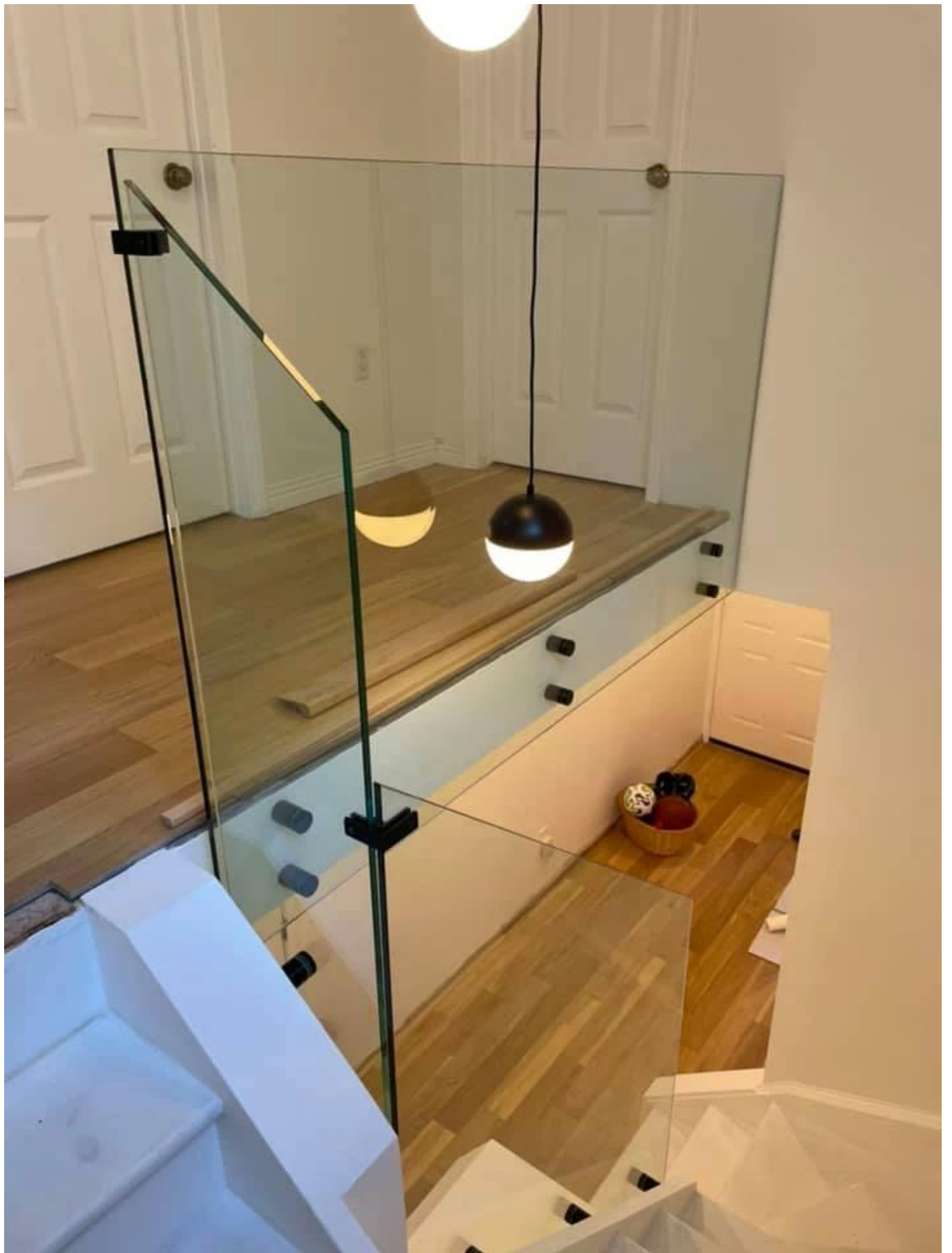
A **point fastening** Glass railing It has various applications:

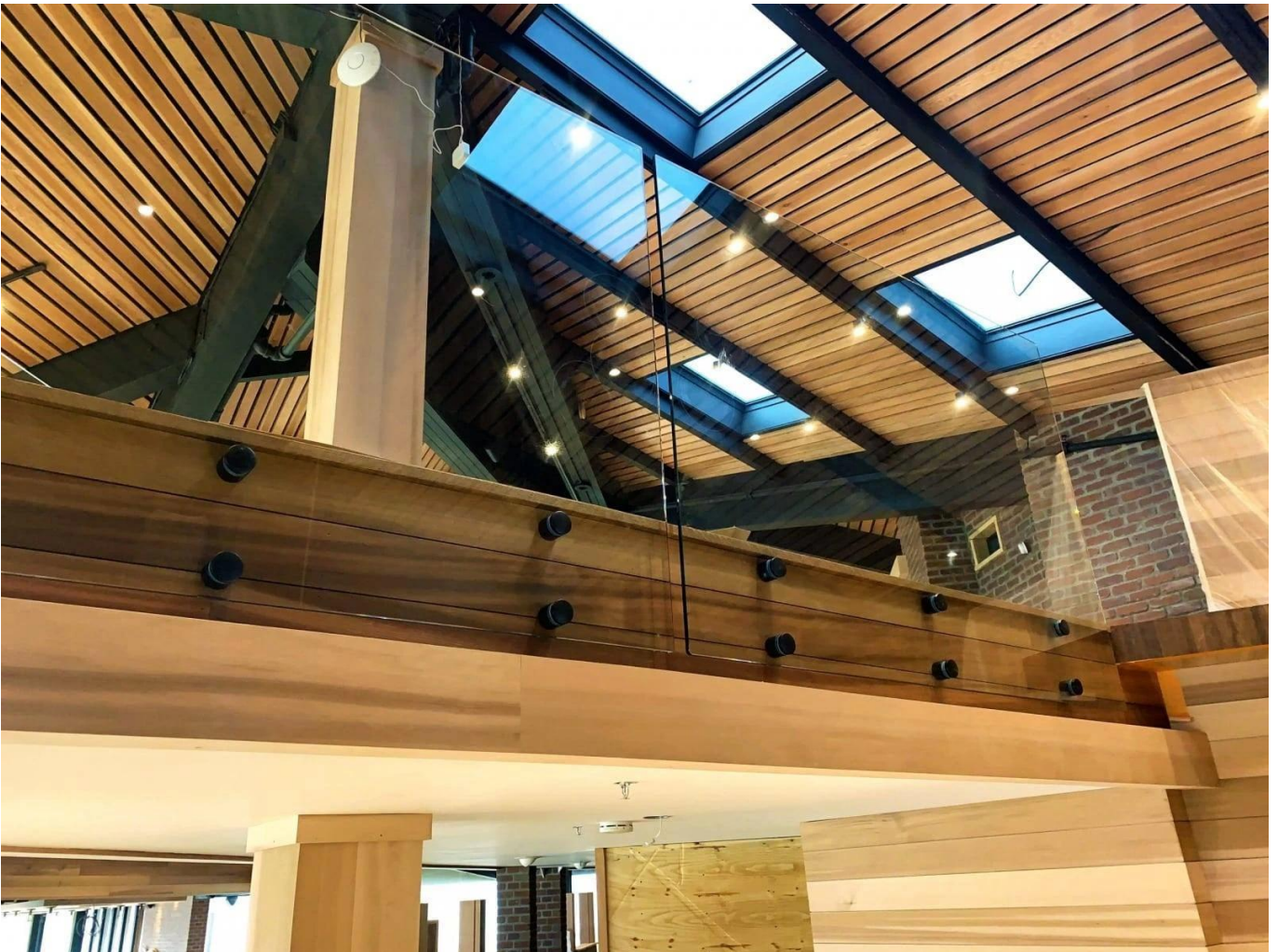
glass safety barrier for the pool and patio

Glass balustrade Balcony

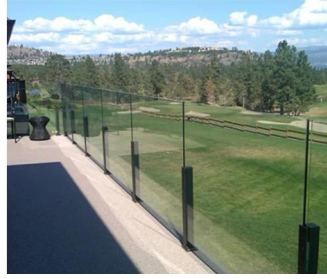
Glass scale Rake

safety guardrail for landing, or loft.





In addition to our **Glass railing on profiles'** range, Kebil also offers a series of glass railings adapted to their needs: Point, fastening Clamp-fixing, fixing side profile, framed on each side, messages, etc ...



Do not hesitate to contact us if you need more information:

vigil

Email: sales03@launch-china.cn.

HP / WhatsApp: +8613686807796