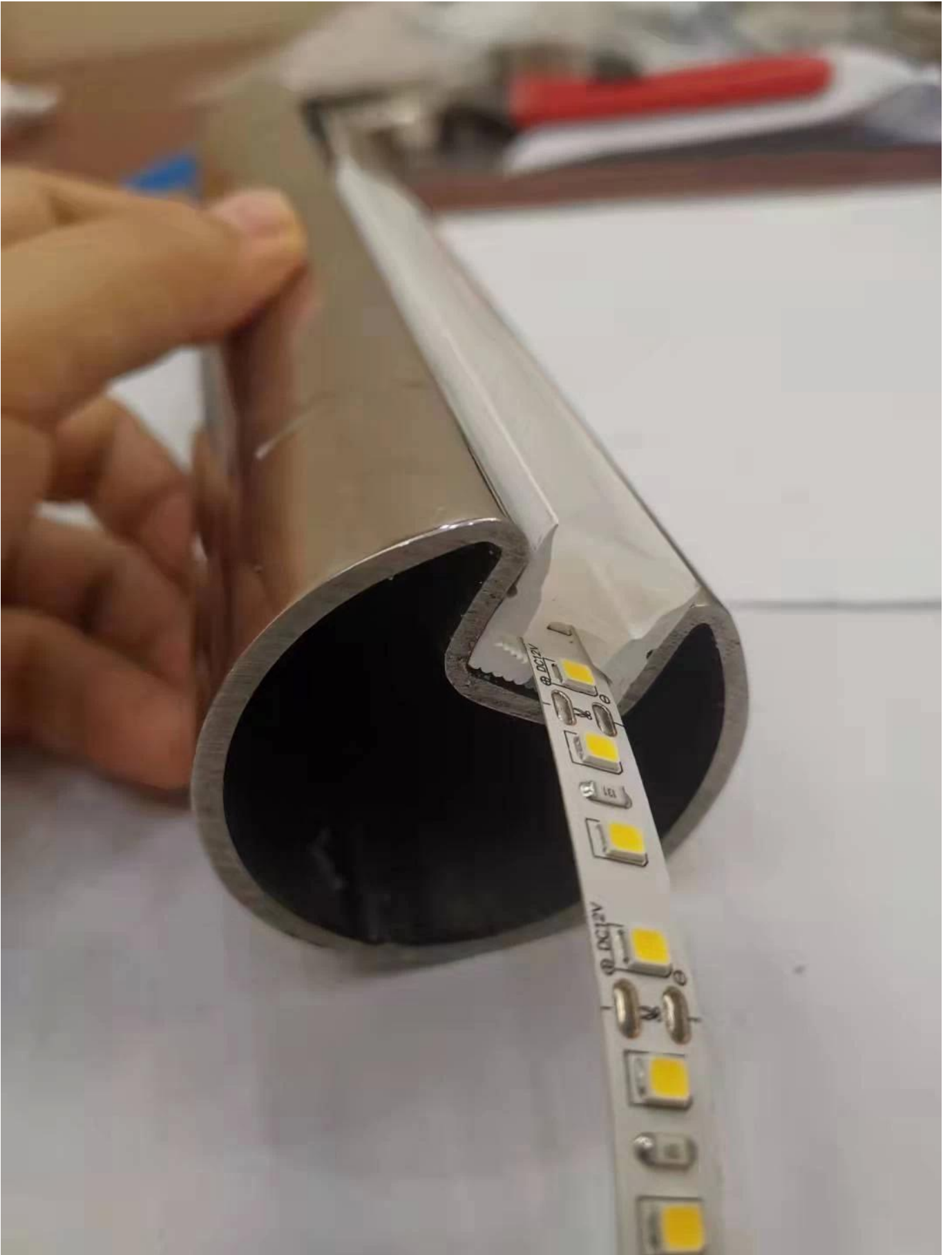


## Stainless Steel Luminous Led Light Handrail For Stairs

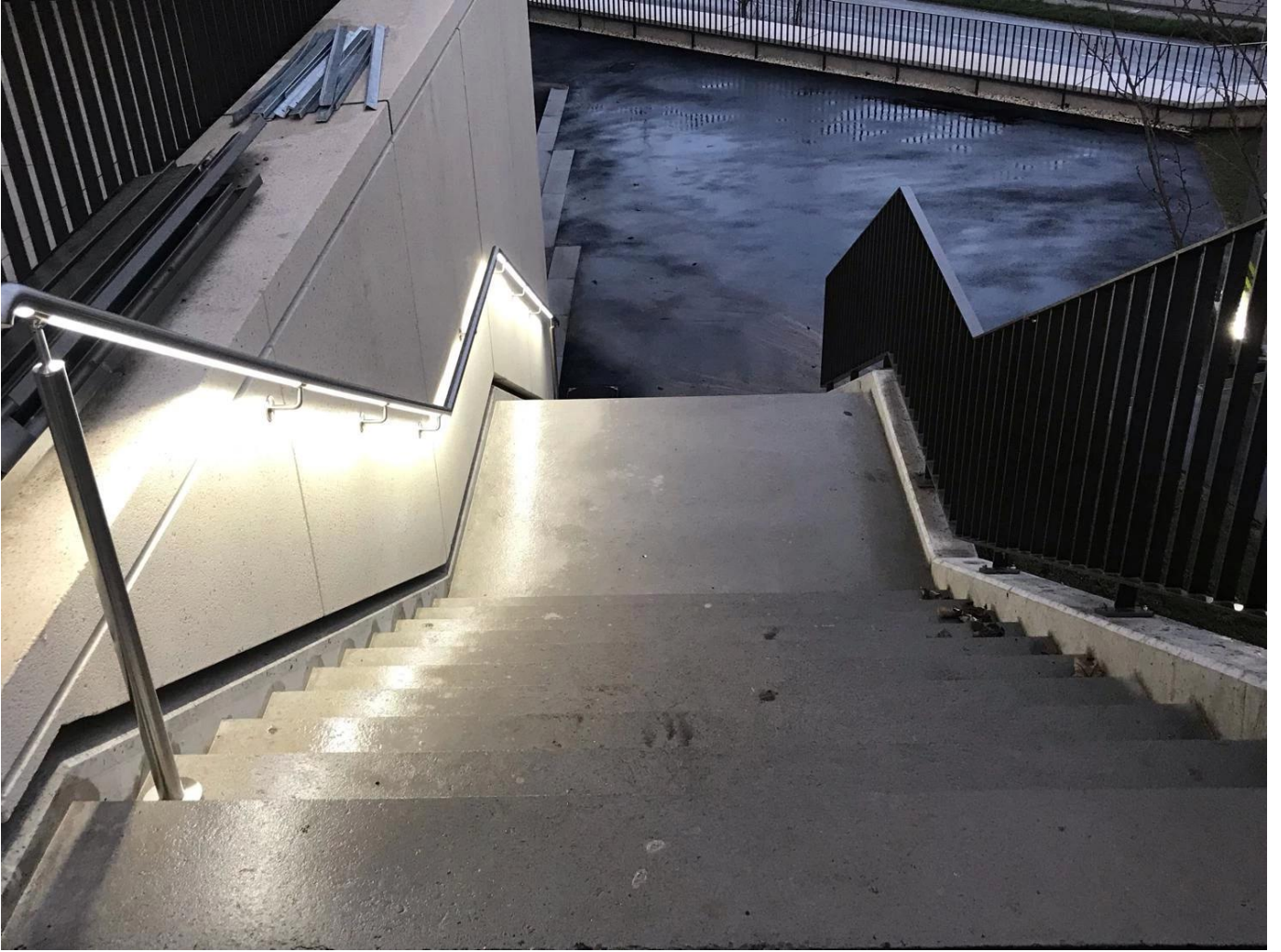
Component	Specification	Material	Surface
Handrail	Φ50.8*1.5mm Φ42.4*1.5mm Φ38.1*1.5mm Φ25.4*1.5mm	SUS304 SUS316	Satin Mirror Black
On wall bracket	Suitable for the corresponding handrail tube	SUS304 SUS316	Satin Mirror Black
LED light	can be changed according your requests	LED	clear











**Handrail Slot Tubes:**





**Available colors for LED light:**



Warm white 暖白



White 正白

Yellow 黄光

Cold White 冷白

Red 红光

Green 绿光

Blue 蓝光

**Welcome to contact us for more information:**

**Eve**

**Email: [sales03@launch-china.cn](mailto:sales03@launch-china.cn)**

**HP/WhatsApp: +8613686807796**