

Powder coating black color steel hand rails for staircase outdoor or indoor use . All necessary brackets/screws will be provided .

Accessories for steel hand rails-

Staircase handrail middle rail to post bracket -



Staircase handrail middle bar,32\*32mm -



Staircase handrail post 40\*40mm-



Staircase top handrail tube-



After assembly-



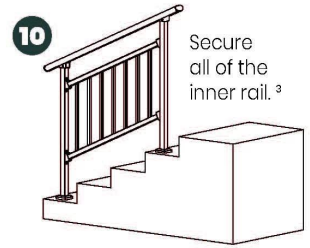
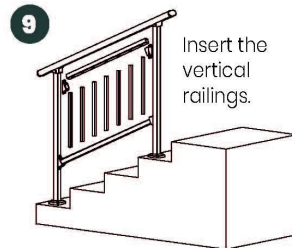
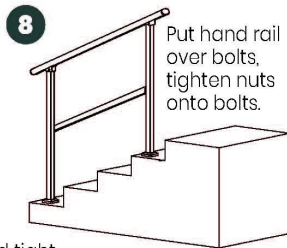
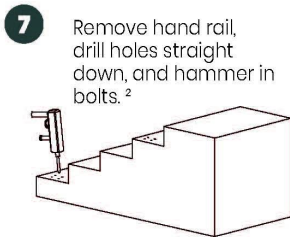
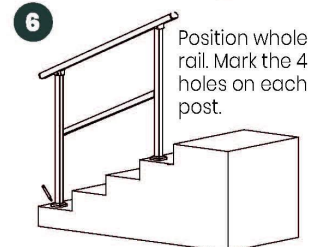
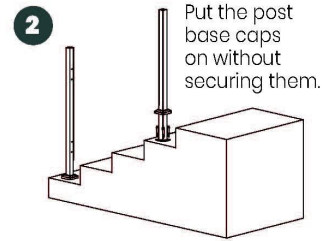
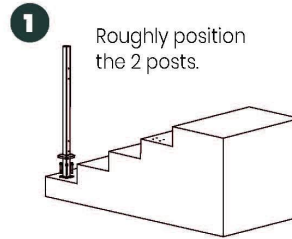
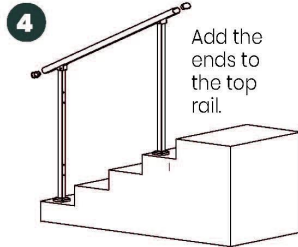
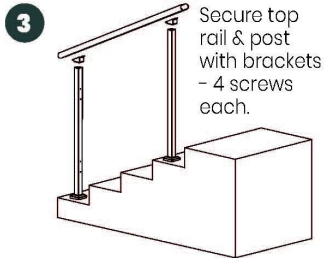


Installation guides-

# Guard Rail Assembly Instructions

**Tools Required:** Electrical Power Drill  
(Impact Drill Preferred)

**Overview:** Assemble the rail and position it before marking holes for drilling. Improper installation can lead to failure of rail system or injury.



<sup>2</sup> Double check posts are parallel and tight against inside rail before marking holes for drilling.

<sup>1</sup> Inside rail will be loose until each post is secured to the ground.

<sup>3</sup> Push and pull top rail & inside rail to ensure all is secure.

Production & packaging of staircase steel handrails at our workshop-



